

About Corearth

Corearth develops and delivers high performance award winning software and supporting services.

Corearth helps organisations manage risk, meet compliance requirements and achieve business optimization.

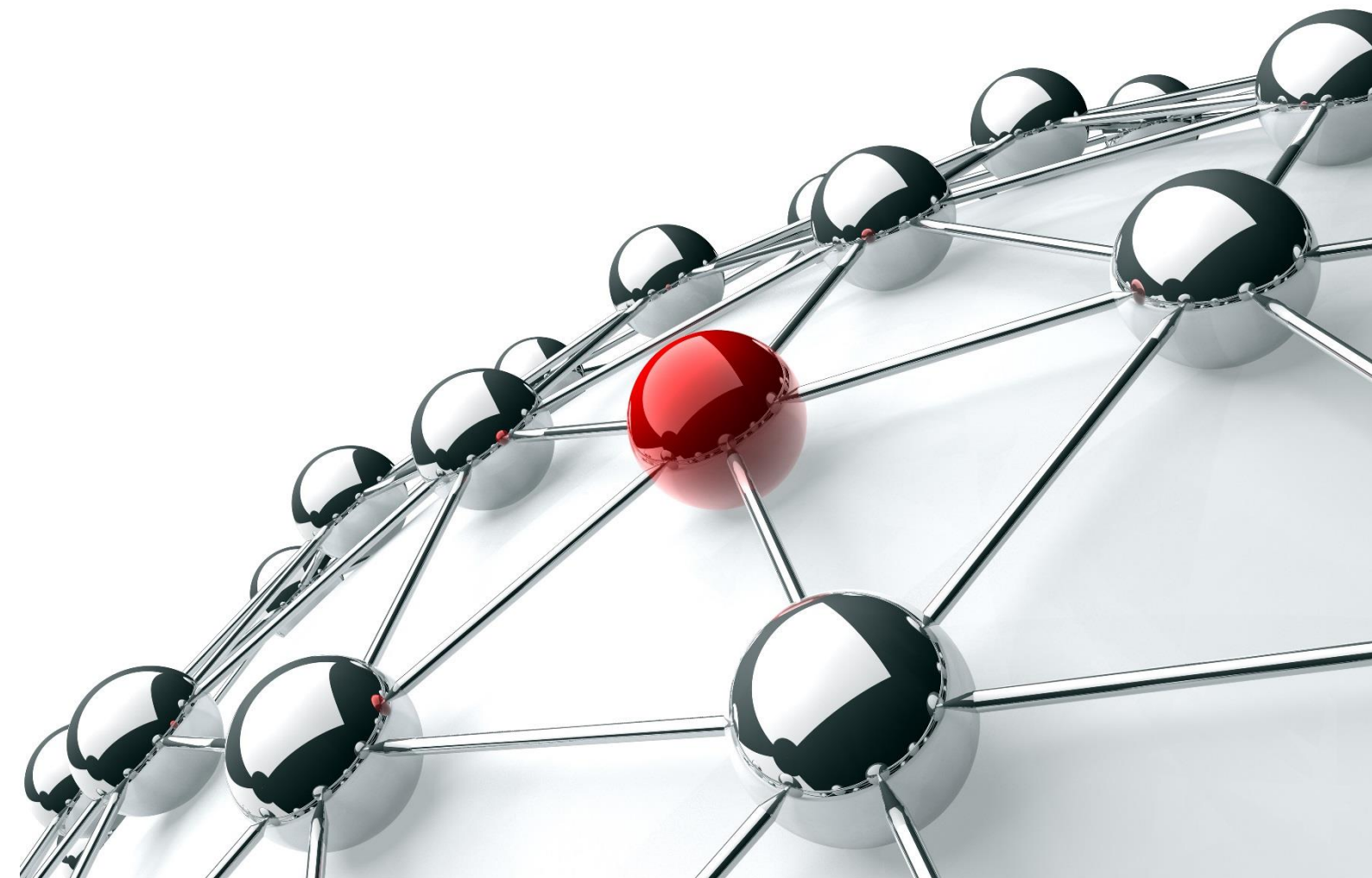


Corearth Australia Pty Ltd
Level 1, 40 McDougall Street,
Milton, Queensland 4064, Australia
www.corearth.com
+61 (0)7 3666 5333

RF-EME Predictive Modelling and Compliance Solution



PROX5 EME



Worldwide Compliance

Public health limits governing human exposure to Radio Frequency (RF) Electromagnetic Emissions (EME) are set by national and international authorities:

- International Commission on Non-Ionizing Radiation Protection (ICNIRP)
- European Committee for Electrotechnical Standardization (CENELEC)
- US Federal Communications Commission (FCC) Office of Engineering and Technology (OET) - Bulletin 65
- Health Canada, Consumer & Clinical Radiation Protection Bureau (CCRPB) - Safety Code 6
- Australian Radiation Protection and Nuclear Safety Agency (ARPANSA) - Radiation Protection Series No.3

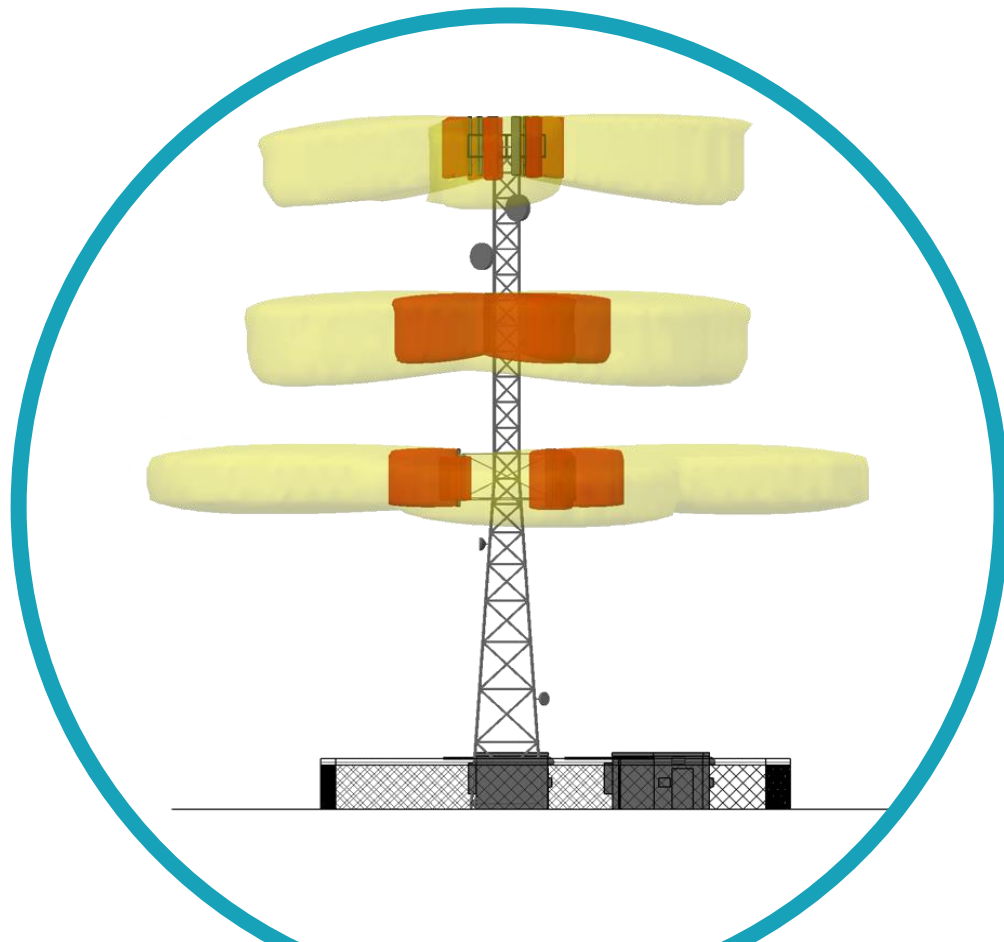
Compliance with these standards has been adopted by national statutory authorities as part of spectrum licencing requirements. Network operators as well as site owners must meet safety regulations for electromagnetic emissions.

Evidence to show compliance with the licence condition determination is obtained by either measuring RF fields or by modelling RF fields derived from mathematical calculations.

ProX5 EME

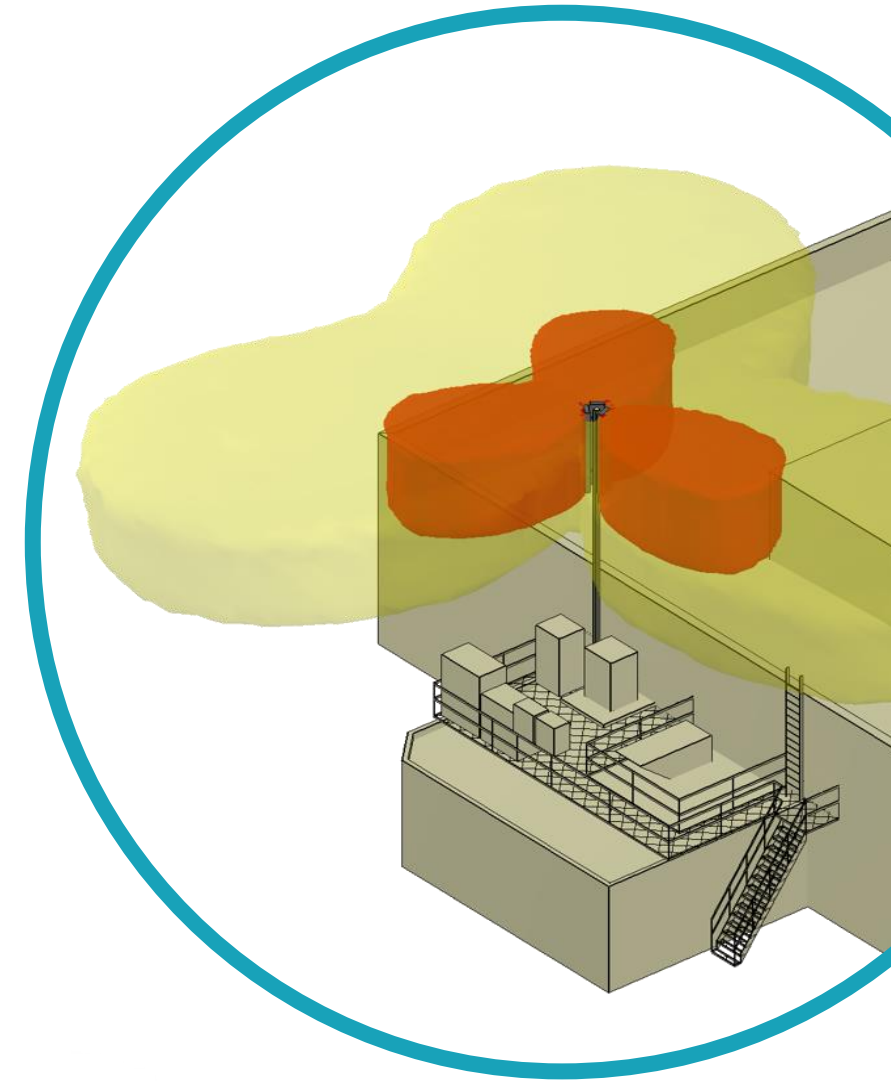
Corearth's ProX5 EME is a patented predictive electromagnetic emission 3D modelling software which accumulatively assesses active antennas on a telecommunication site and ensures that the site meets World Health Organisation (WHO) recommendations.

ProX5 EME is a powerful RF exposure modelling software tool with built-in capability to create comprehensive documentation to demonstrate compliance with international standards.



“As a result of growth in the telecommunication industry, more telecommunication sites are deployed and more electromagnetic emissions are generated”

“In order to manage networks, carry out complex audits and reporting requires a solution that is flexible, comprehensive and accredited to recognised standards”



Capabilities

- Data aggregation and calculation of accumulative electromagnetic emissions of a site in accordance with international standards
- Generate accurate exclusion zone assessments using Corearth's patented radiation modelling technology
- Combine information from a site drawing with a customised template using the Automated Document Creation function
- Produce documentation ranging from drawings with an equipment summary to a complete site management report
- Equipment colour coding for easy identification
- Import, edit and utilise existing CAD drawings within ProX5 EME's CAD compatible environment
- Built-in shortcuts and configurable text
- Integration with Corearth's PlusPoint Asset application to provide a complete site management solution
- Customisable templates
- Extensive Antenna Definition libraries